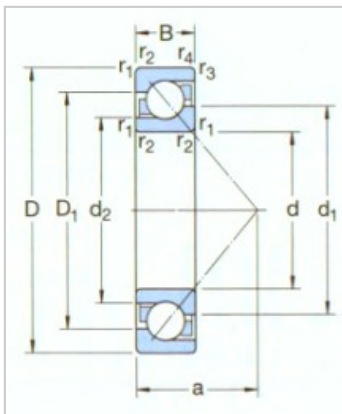
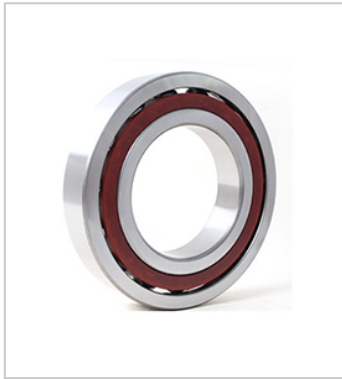


Angular Contact Ball Bearing

d 80-100mm-***7316BECBP-**

参数信息:



Designation1) :

General assembly bearing :	*7316BECBP
Basic design bearing :	-

Principal Dimensions(mm) :

d :	80
D :	170
B :	39

Basic load ratings (kN) :

C :	143
Co :	118
Fatigue load limit Pu :	4.5

Rated Speed (r/min) :

Reference speed :	5000
Limit speed :	5000
Mass kg :	3.64

Dimensions(mm) :

d :	80
d1 ~ :	115.2
d2 ~ :	97.1
D1 ~ :	136.8
r1,2(min) :	2.1
r3,4(min) :	1.1
a :	72

Shoulder and chamfer size(mm) :

da(min) :	92
Da(max) :	158
Db(max) :	163

ra(max) :	2
-----------	---

rb(max) :	1
-----------	---

: